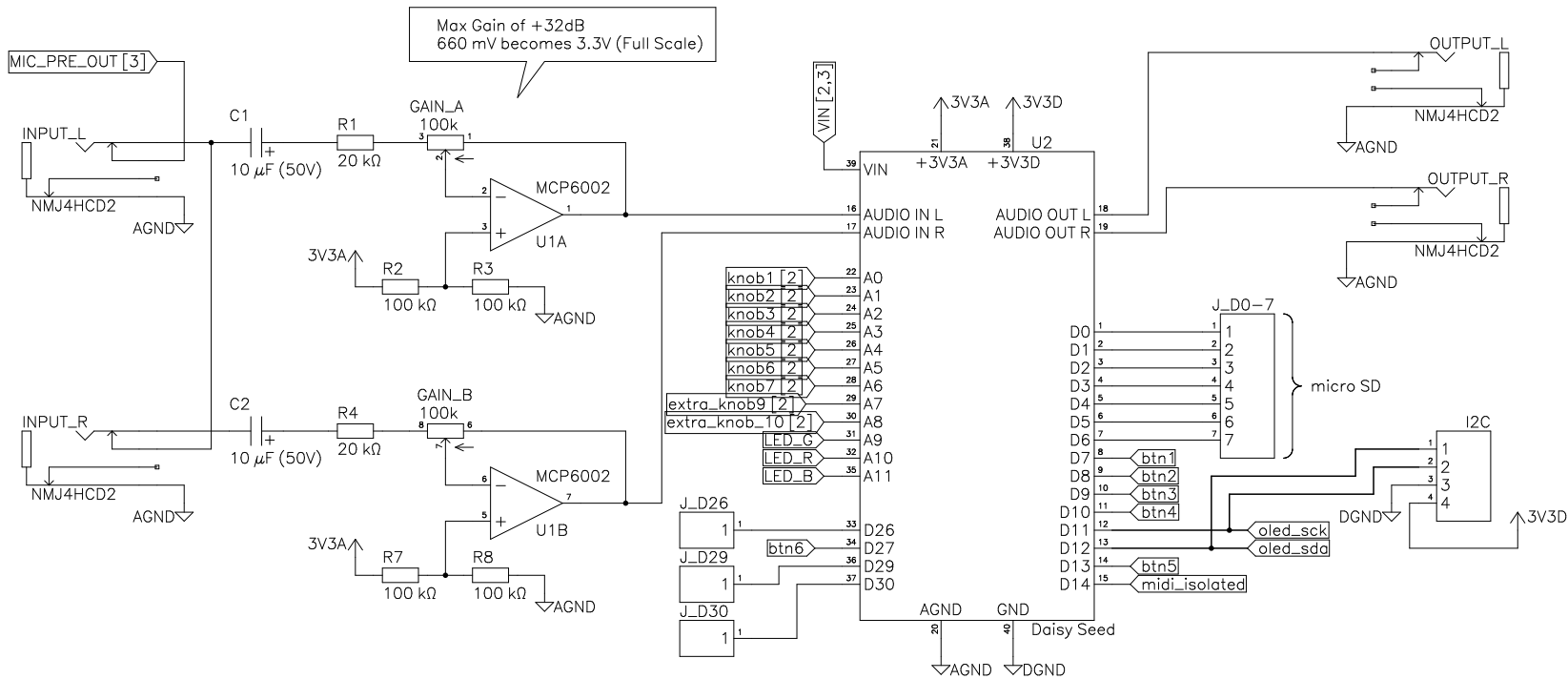
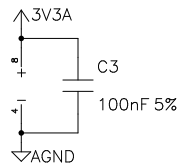


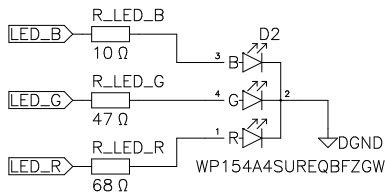
Audio I/O and Daisy Seed Board



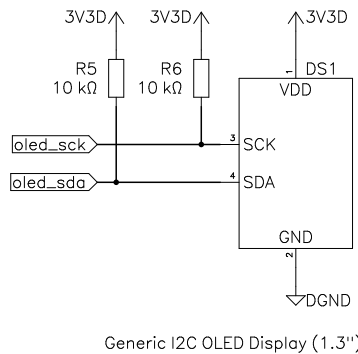
U1 Power



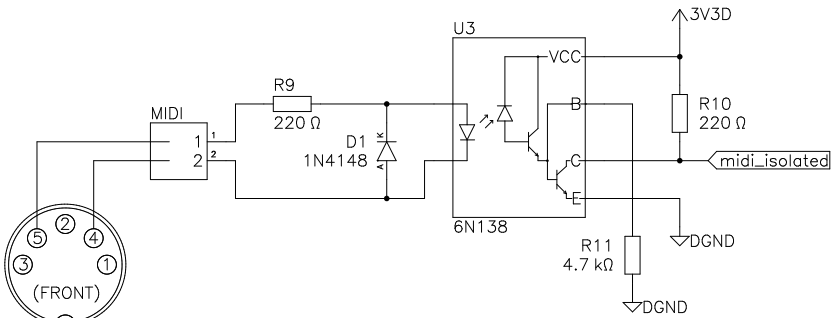
RGB LED



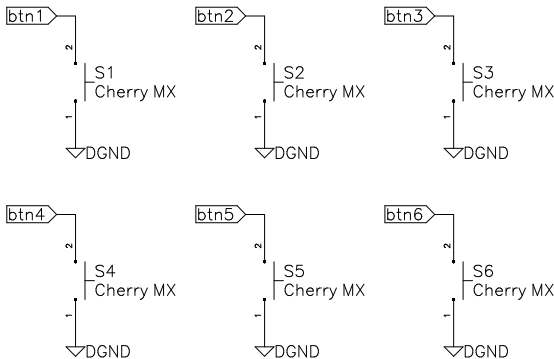
OLED Display



MIDI Input



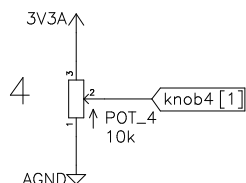
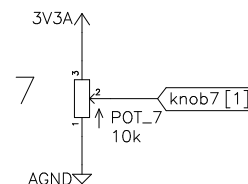
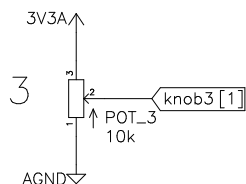
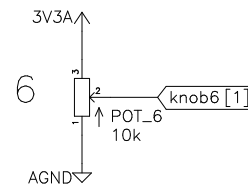
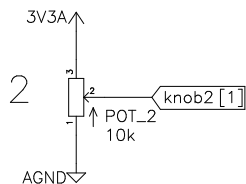
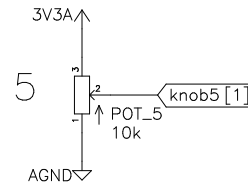
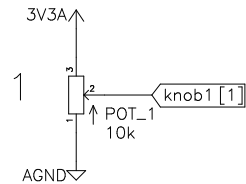
Buttons



Sheet	Number
Main	1/3
Project	Revision
daisy	1.0
Drawn by	
David Huss	
Date	
2023-11-06	

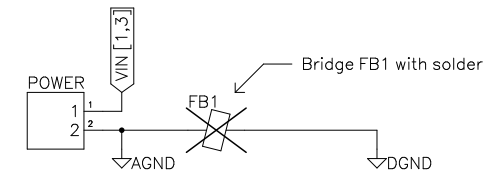


Knobs for Digital Control



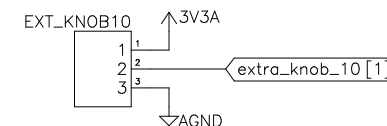
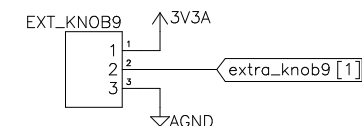
NOTE: POT 8 is the input gain control
and can be found on sheet 1

Solder Points for External Power (14VDC Max!)



If this module is used with an USB-Powersupply VIN is not needed. If the optional mic preamplifier is to be used, connect +12VDC here.

Solder Points for External Pots



Sheet	Knobs & Ext. I/O	Number	2/3
Project	daisy	Revision	1.0
Drawn by	David Huss		
Date	2023-11-06		



The gain of the preamp can be trimmed using the MIC_GAIN trimmer.

