

└ USB-Power In ┘

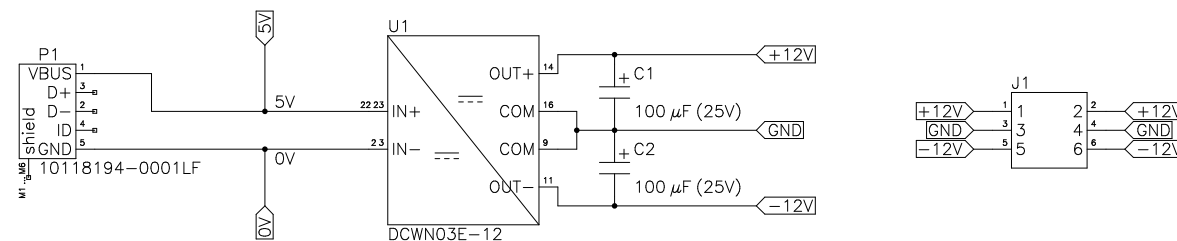
Mikro-B Jack (for use
with Cellphone charger)


└ 5V to $\pm 12V$ ┘

Draws 750mA at full
load

$\pm 12V$ Output ──────────

125mA per Rail
MAX 900 μF Capacitor Load per Output



Sheet Main	Number 1/1
Project 3WPSU	Revision 1.1
Drawn by David Huss (atoav)	
License CC-NC-BY-SA	 open source hardware
Date 2020-01-18	